



Accueil

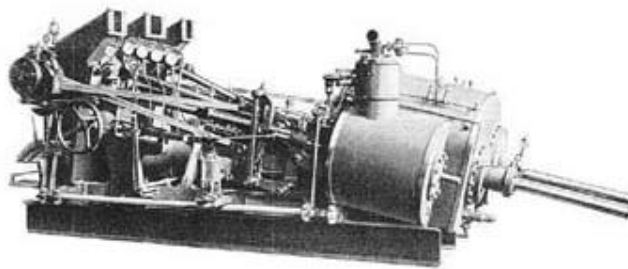
TRIVAPOR



Trivapor cordially invites you to participate in:

THE SWISS STEAM EVENT 2005

Saturday, February 12th – 3 Steam Locomotives and 1 Paddle Steamer Engine – from Basel to Yverdon



Maffei Steam Engine Nr. 576, built in 1926 - Picture: Bayerisches Wirtschaftsarchiv (BWA)



Maffei Locomotive Ed 2x2/2 196, built in 1893, SBB Historic



Krauss Maffei Locomotive E 3/3 16388, built in 1942, VVT



Engine 52 8055, built in 1942, rebuilt in 1998, DLM



Winter Steam along the Foothills of the Jura Mountains

It has been over 75 years since a large paddle steamer engine of German manufacture has been brought to Switzerland. The historic Maffei steam engine Nr. 576, which was purchased by the Swiss non-profit organization Trivapor in June of 2004, will enable the historic Escher Wyss paddle steamer „Neuchâtel“ of 1912 to return to steam and to return to active service. In order to celebrate the first arrival of the engine in Switzerland and the region of the Jura Lakes in fitting fashion, Trivapor is organizing a special steam train to haul the engine along an attractive mainline route from Basel to Yverdon. All paddle steamer enthusiasts and railway fans from Switzerland and all over Europe are cordially invited to ride along on the train and to book their tickets for this nice event.

Special steam train from Basel via Olten, Oensingen, Solothurn, Biel, and Neuchatel to Yverdon and back to Basel

- Impressive, light-oil fired, 2-10-0, 52 class steam locomotive as lead engine
 - Attractive rolling stock of the „Nostalgie Rhein Express“ consisting of historic Swiss carriages and a dining car
 - Stylish 1st and 2nd class cars as well as nostalgic and luxurious saloon cars from the Oensingen Balsthal Bahn - OeBB
 - Double steam traction between Solothurn and Grenchen with 52 8055 and the vintage Maffei Mallet Ed 2x2/2 196
 - Double steam traction between Neuchatel and Yverdon with 52 8055 and the veteran Krauss Maffei engine E 3/3 16388
 - Arrival of the steam train and the paddle steamer engine in Yverdon, as well as attractive steam locomotive shuffling in Yverdon
- Regular runs by the vintage Maffei built Mallet Ed 2x2/2 196 are rather rare! Take advantage of the chance to see this wonderful and unique steam locomotive in winter service and together in double traction with 52 8055. Ed 2x2/2 196 is the only Mallet type engine owned by the SBB!**



Come aboard! Support the Paddle Steamer „Neuchâtel“ !

Come along, welcome the Maffei steam engine in Switzerland, and show your support for the restoration and return to service of PS “Neuchâtel“! Enjoy a wonderful Saturday with lots of winter steam and even more good company, and see the beautiful landscapes and distinctive castles along the shores of the Jura lakes and the foothills of the Jura mountains. As a thank you to the hundreds of people who supported Trivapor in the campaign to acquire the Maffei steam engine, all the ticket prices reflect a particularly good value. Don't hesitate, make your booking as well, and join the train!

>>> Tickets and Reservations can be made directly with RailEvent in Winterthur, easily via phone or email.

>>> www.railevent.ch Tel: +41 52 214 33 60, Email: info@railevent.ch

The attractive Ticket categories:

Boarding in Basel Bad Bhf, Pratteln, Liestal, or Sissach (return ticket): **120 Francs for 2.Class, 169 Francs for 1.Class**

Boarding in Olten, Oensingen, Solothurn, Grenchen or Biel (return ticket): **99 Francs for 2. Class, 149 Francs for 1.Class**

Special discount rates for the non-heatable saloon cars, boarding from Solothurn, Biel, or Neuchâtel – 50 Francs flat-rate Kids travel at half-price!

Timetable: Basel Bad Bhf dep 7:56 – Pratteln dep 8:14 - Sissach dep 8:43 – Olten dep 9:06 – Solothurn arr 9:42 – photostop with locomotive shunting in Solothurn – Solothurn dep 10:46 – Grenchen dep 11:15 – Biel dep 11:35 – Neuchâtel arr 12:07 – locomotive shunting – Neuchâtel dep 12:22 – Yverdon arr 13:35 – break with steam locomotive shuffling – Yverdon dep 16:00 – Neuchâtel dep 16:53 – Biel dep 17:25 - Solothurn dep 17:53 - Oensingen dep 18:10 – Olten dep 18:55 Basel Bad Bhf arr 19:56



Members of the Trivapor Club 1926 are invited to travel along for free!

